

## Chapter

## 3

## Assembly Procedure

*Please follow the information provided in this section to perform the complete assembly procedure of the Eee PC 4G (701). Be sure to use proper tools described before.*

After you have completed the previous chapter of complete disassembly, please follow this chapter to assemble the Eee PC 4G (701) back together. This chapter describes the procedures of the complete Eee PC 4G (701) assembly. In addition, in between procedures, the detailed assembly procedure of individual modules will be provided for your service needs.

The assembly procedure consists of the following steps:

- LCD Module
- Motherboard Module
- Top Case Module
- WLAN Module
- Keyboard Module
- Memory Module
- Battery Module

## LCD MODULE

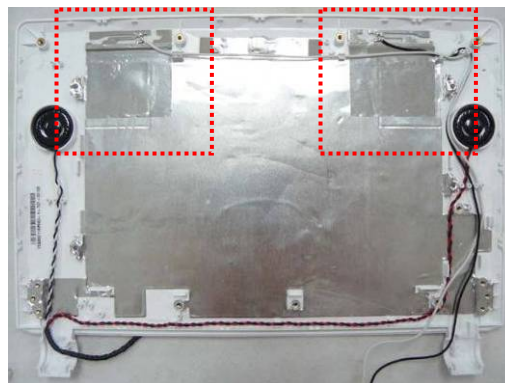
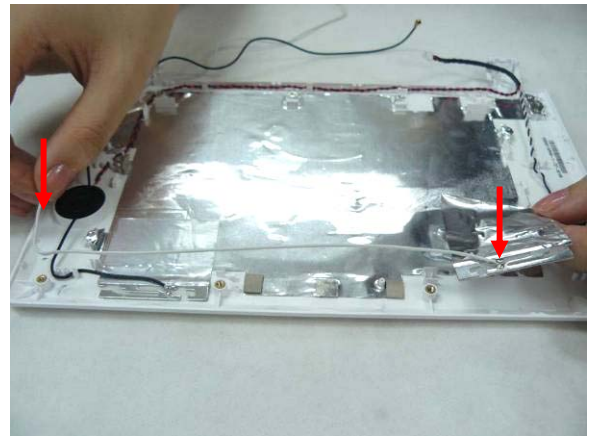
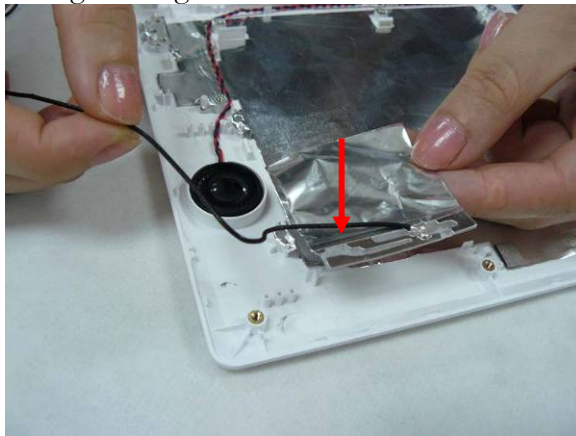
### LCD Module

*The illustrations below show how to assemble and install the LCD module of the Eee PC 4G (701).*

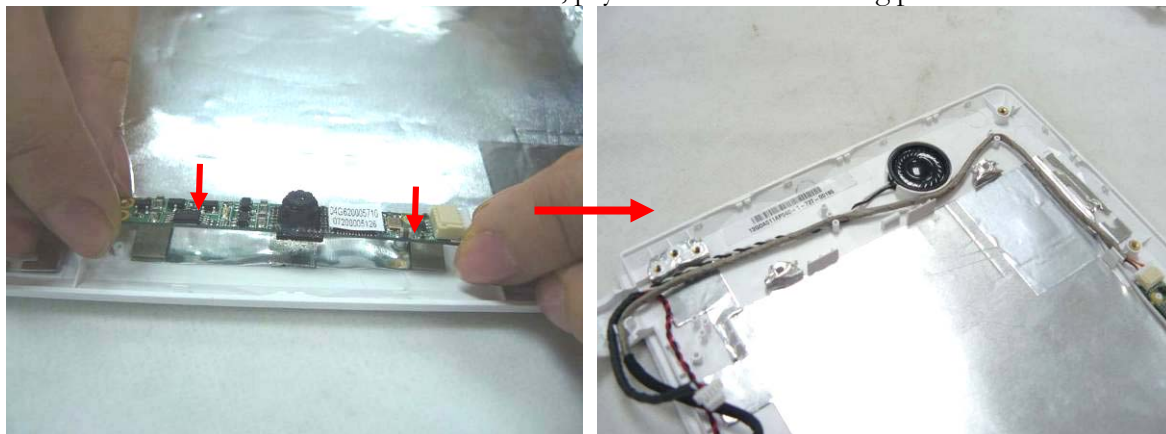
1. Install the two speakers on LCD back cover and arrange the speaker cable well through cable guide.



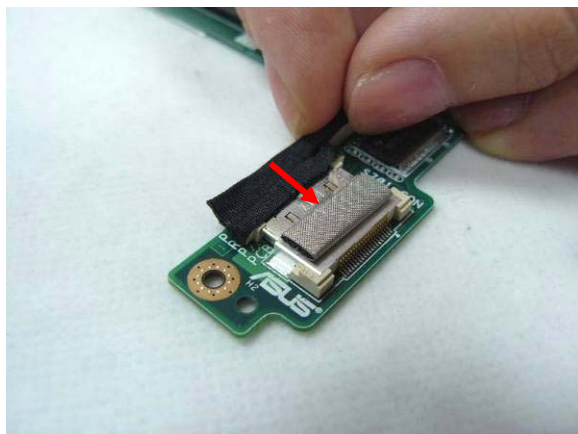
2. Assembly the black and white antennas on LCD back cover and well arrange the antenna cables through cable guides.



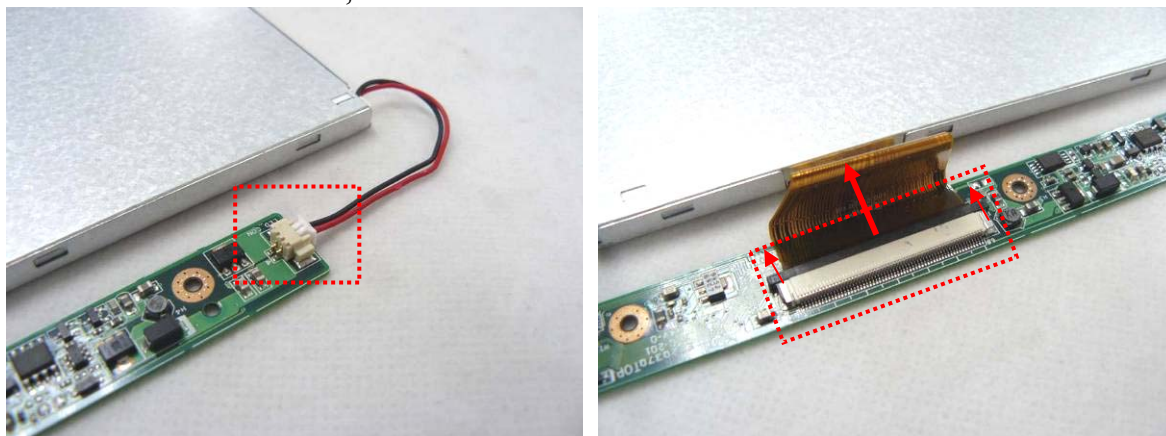
3. Install the camera board on LCD back cover, pay attention to the aiming pole.



4. Connect the coaxial cable with inverter board.

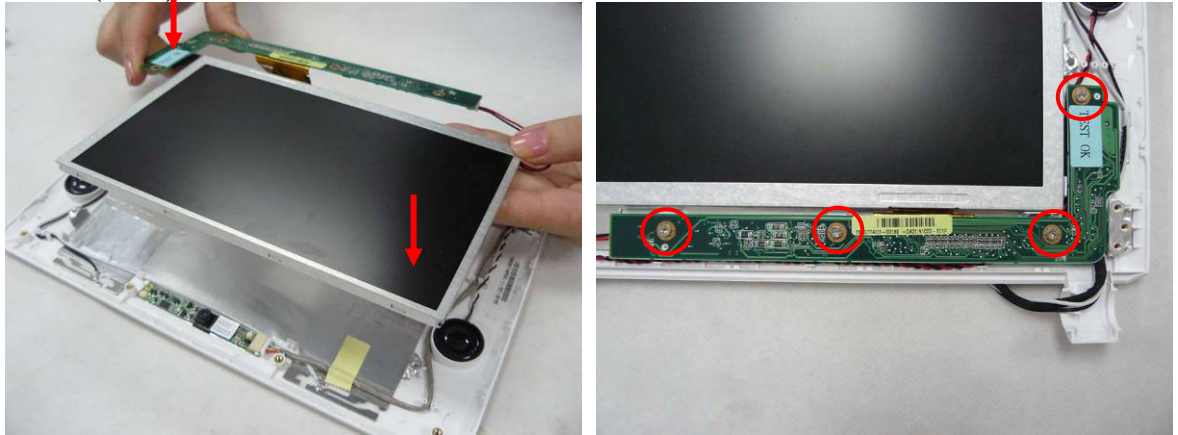


5. Connect the inverter cable, LCD FPC cable with inverter board.

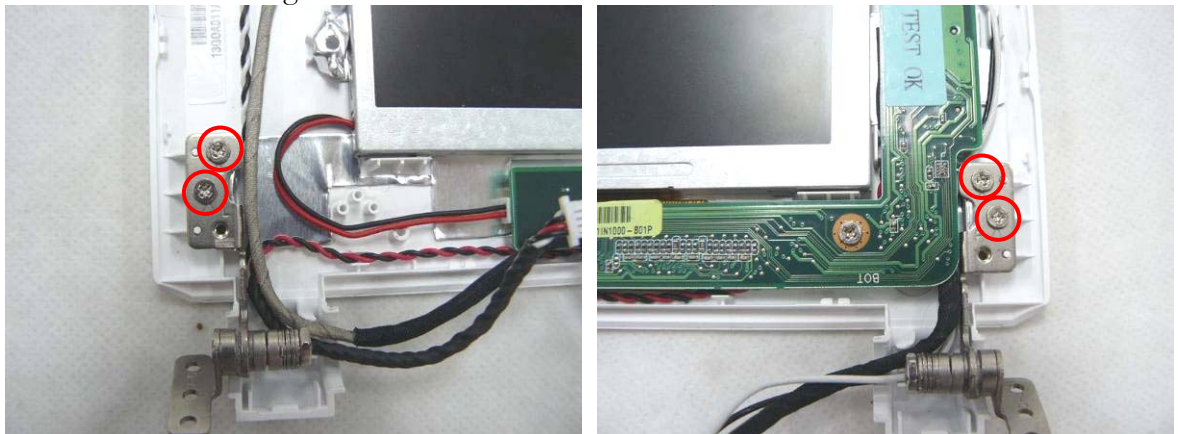




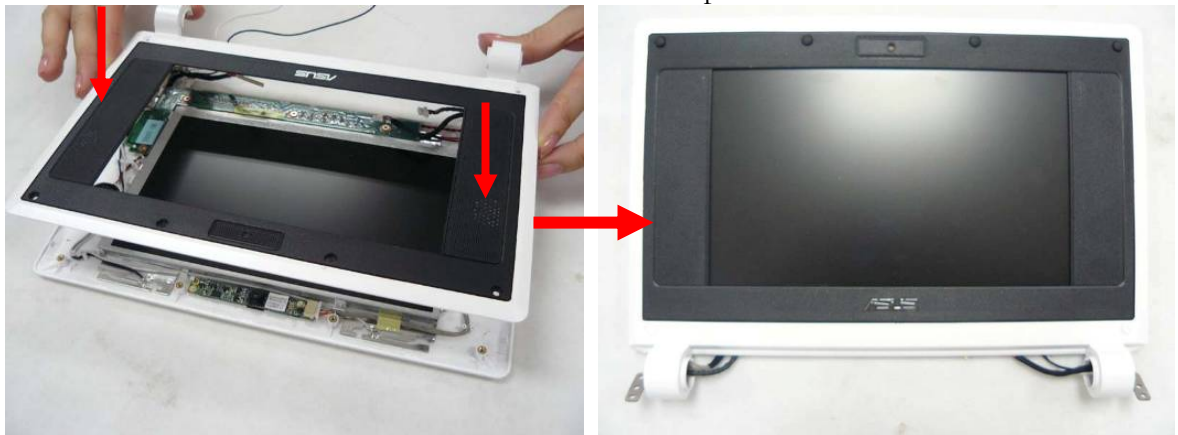
6. Install the LCD panel together with the inverter board on LCD back cover and then secure 4 screws (M2\*4) on it.



7. Assemble both hinges and secure 2 screws (M2\*4) on each.\*pay attention to differences between the left and right.



8. Install the LCD front bezel on LCD back cover and press the sides to fix them well.



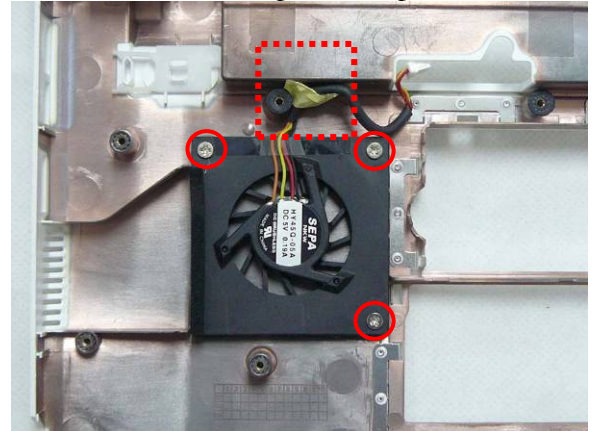
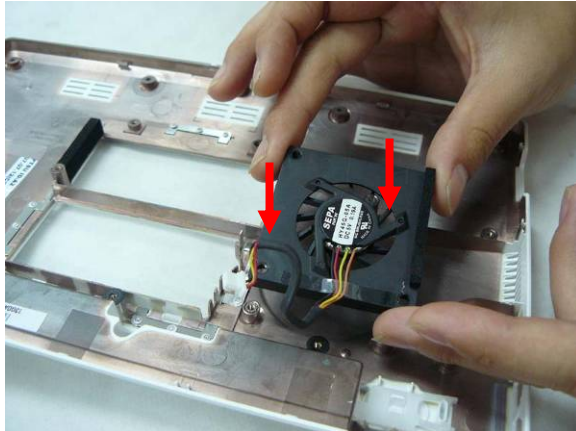
9. Secure 6 screws (M2\*4) on LCD front bezel and then fix 6 rubber pads on it.



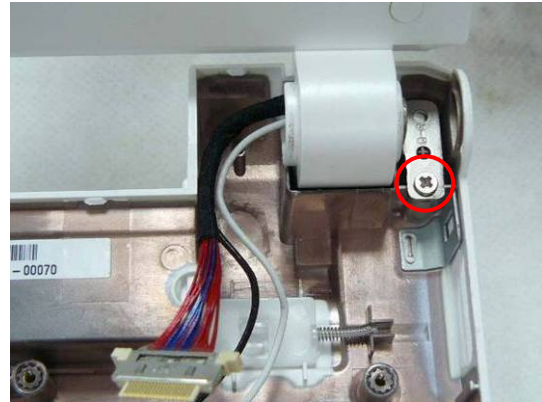
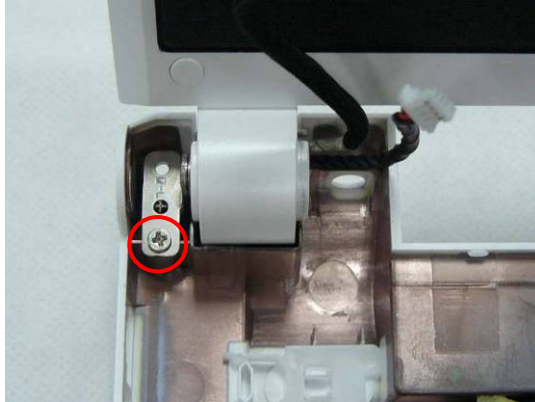
## Motherboard

*The illustrations below show how to assemble and install the motherboard of the Eee PC 4G (701).*

1. Install the Fan module on bottom case, secure 3 screws on it and fix 1 piece of tape on the cable.

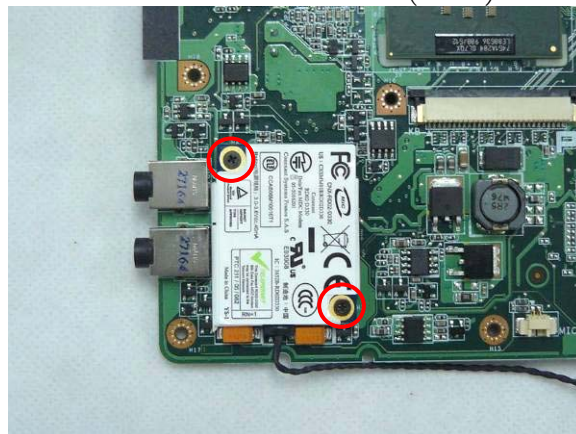
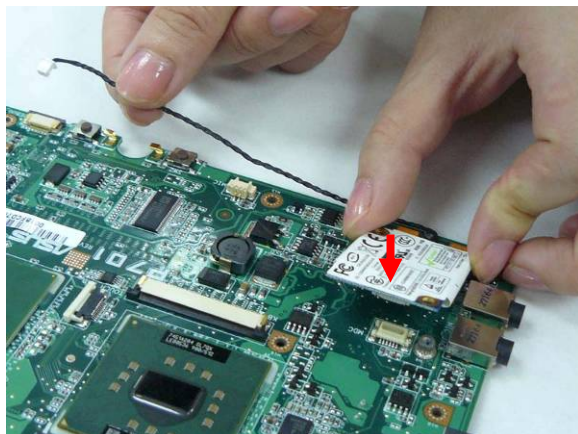


2. Hold the LCD to fix its hinges on bottom case and then secure 2 screws (M2\*4).

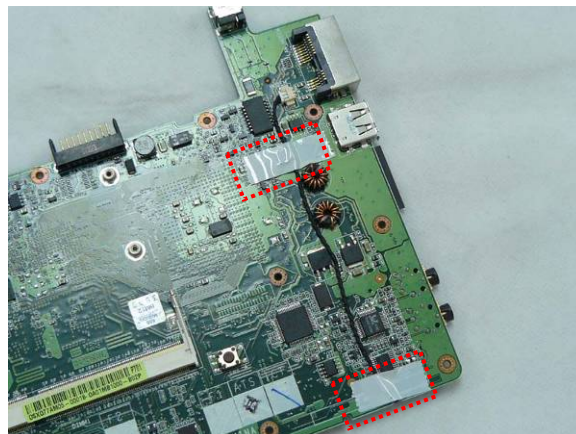
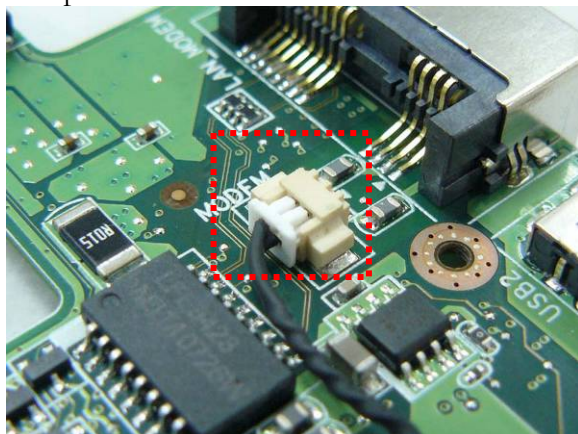




3. Connect the Modem module with the mother board and then secure 2 screws (M2\*3) .



4. Connect the Modem cable with the mother board and then arrange the cable to fix 2 pieces of tape on it.



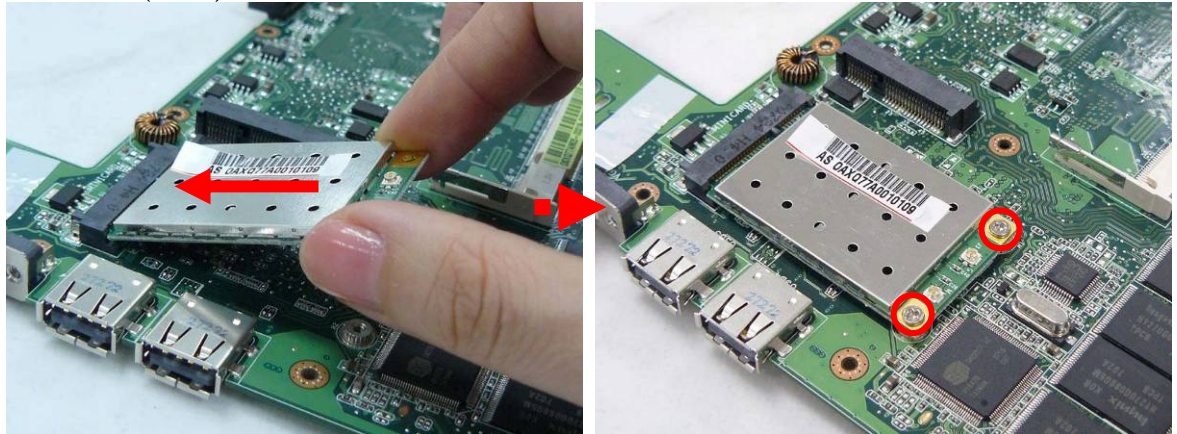
## WIRELESS LAN MODULE INSTALLATION

### Wireless LAN Module

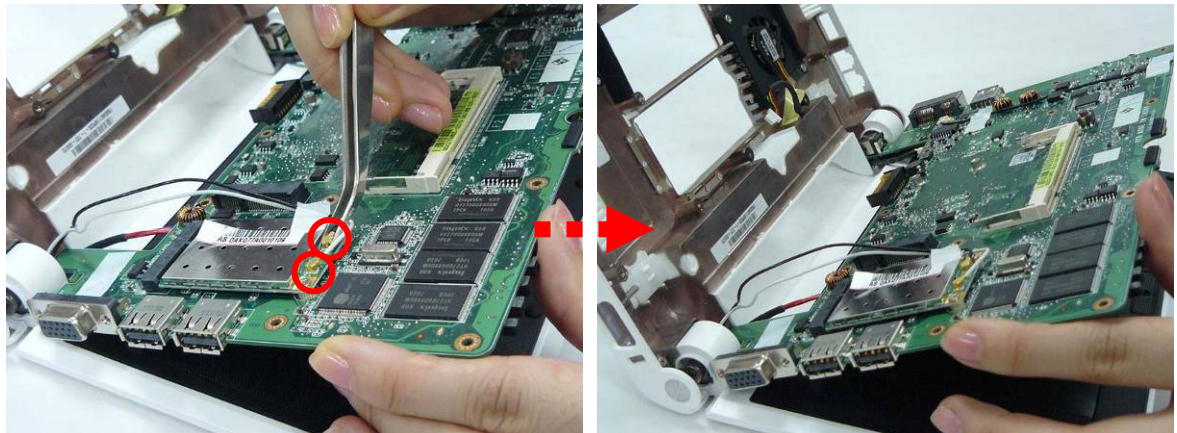
*The illustrations below show how to assemble and install the Wireless Lan Module of the Eee PC 4G (701).*

#### Installing Wireless LAN Module

1. Insert WLAN module into its slot at 30 degrees angles and press it down softly, then secure 2 screws (M2\*4) on it.

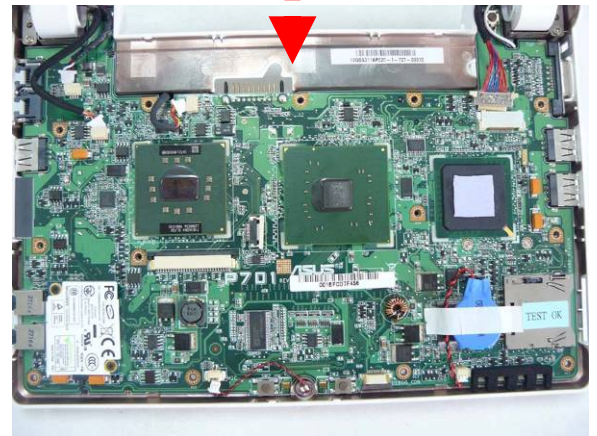
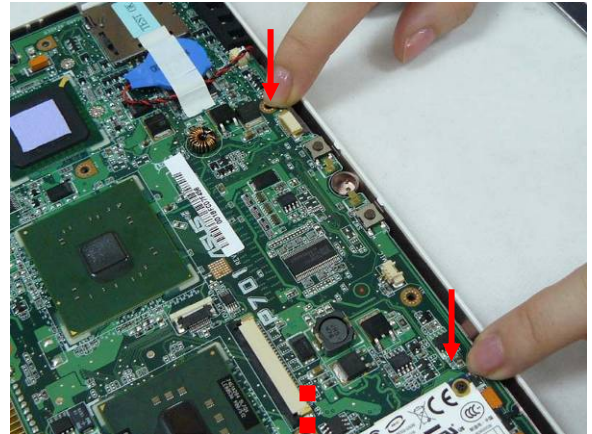
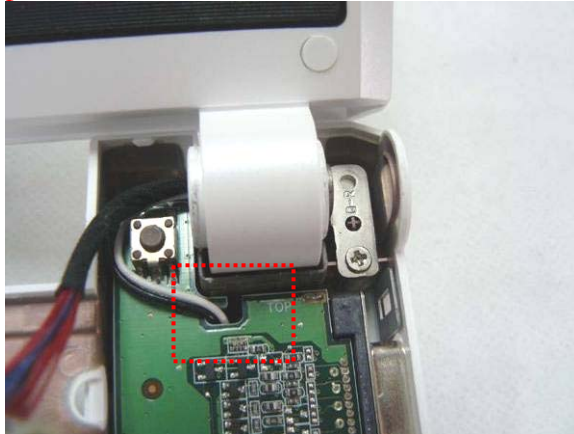


2. Hold the mother board on bottom case and then connect the WLAN antennas with WLAN module.

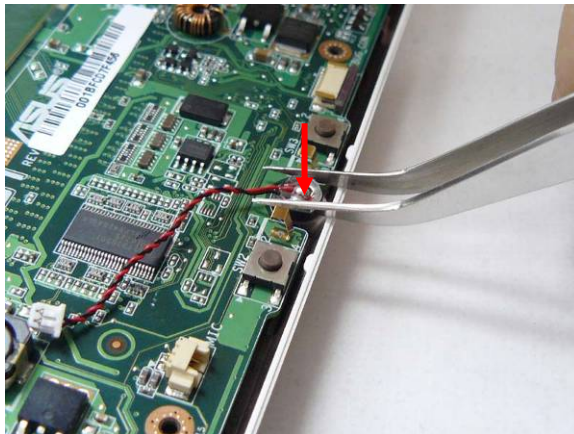




3. Install the mother board on bottom case, to install you should first install the top side, then softly pry the two sides to the ports ends fit the bottom case well, finally press the bottom side to lock the two latches. *\*make sure the antennas arranged through the hook at mother board, and all the cables placed above the mother board.*

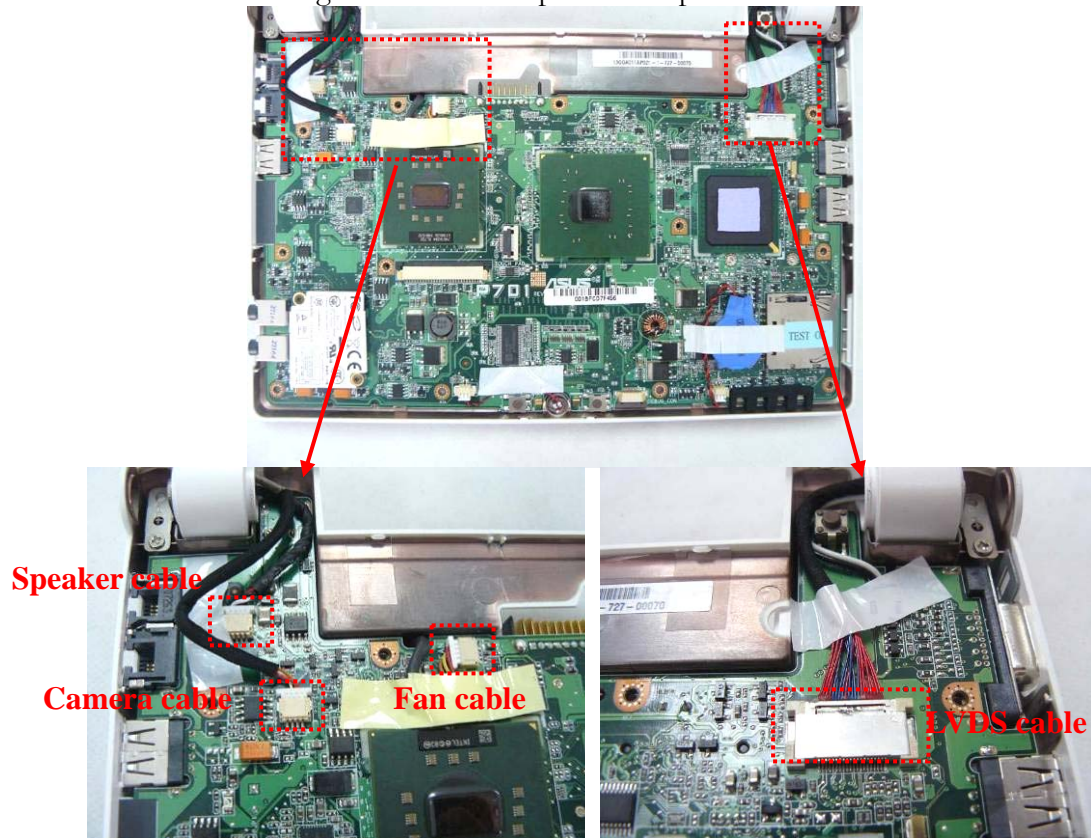


4. Install the microphone , connect it with the mother board and then fix 1 piece of tape on the cable.





5. Connect the following cables and fix 3 pieces of tape on it.

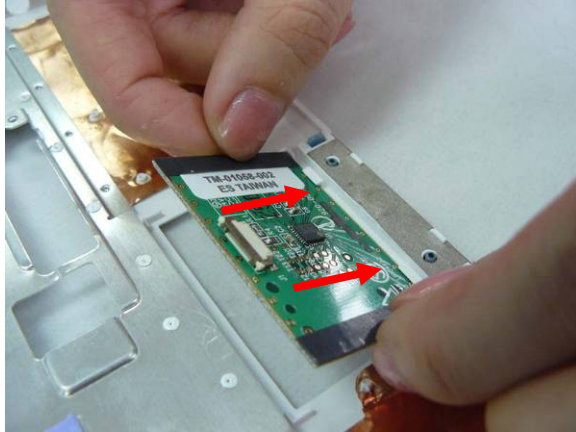


TOP CASE  
MODULE

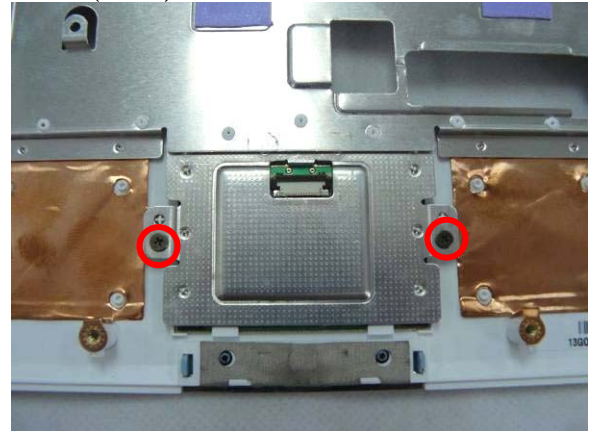
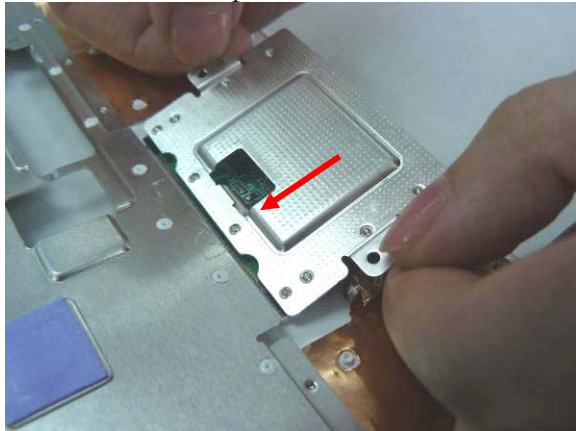
## Top case Module

*The illustrations below show how to assemble and install the top case module of the Eee PC 4G (701).*

1. Install the touch pad board on top case.

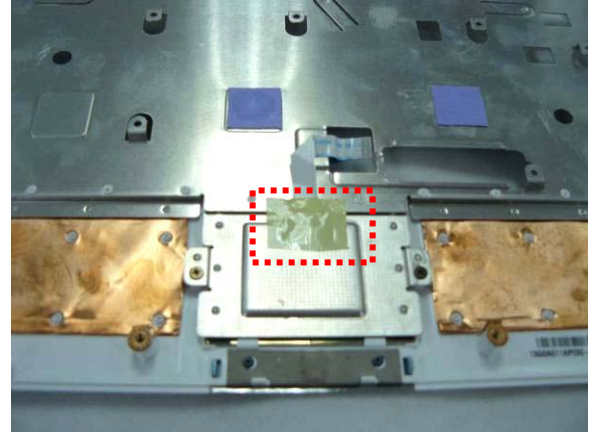
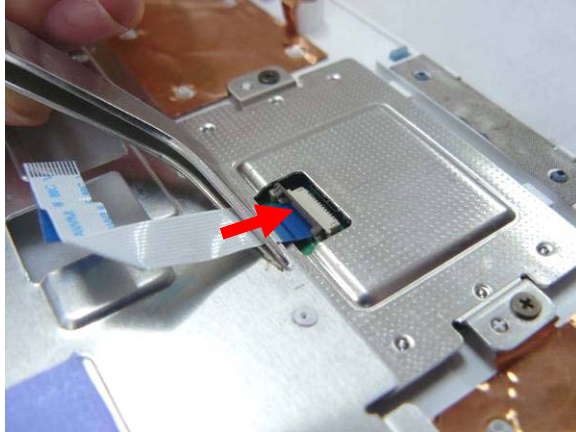


2. Install the touch pad bracket and then secure 2 screws (M2\*4) on it.

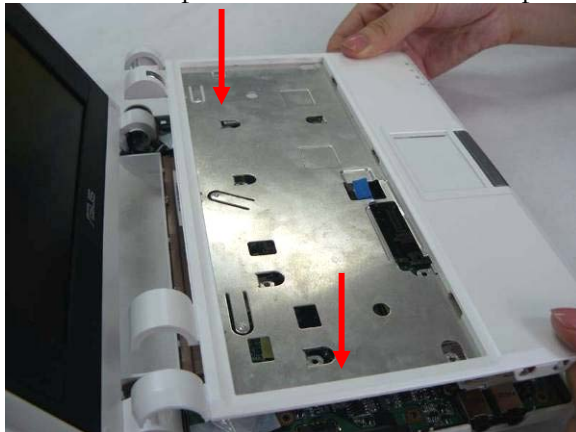




3. Connect touch pad FPC with touch pad board , fix the connector latch and then fix 1 piece of tape on it.



4. Install the top case with bottom case and press the four sides to make them fixed well.



5. Secure 6 screws (M2\*4) on the bottom case.



6. Connect the touch pad FPC and then secure 9 screws (M2\*4) on it.



## KEYBOARD

### Assembling Keyboard

*The illustrations below show how to assemble and install the Keyboard of the Eee PC 4G (701).*

## KEYBOARD

## ASSEMBLY

1. Connect keyboard FPC with top case.





2. Assemble the keyboard plate and press the 3 latches (F1; F6;Pause) in keyboard to lock it.



## MEMORY MODULE INSTALL

### Memory Module

*The illustrations below show how to install the external Memory Module of the Eee PC 4G (701).*

1. Insert Memory at the same 45° angles and press down until it clicks into the latches.



2. Install the Memory cover and then secure 2 screws (M2\*4) on it.



---

BATTERY  
MODULE

---

## Battery Module

*The illustrations below show how to install battery module of the Eee PC 4G (701).*

Install battery module.

1. Slide the battery module into its compartment
2. Slide on the battery lock .

